

DATI TECNICI

precisione
caduta di tensione standard
coefficiente temperatura
materiale tondini
sovraccarichi:
permanente
fino a 250 A
da 251 a 2000 A
da 2001 a 10000 A
temperatura di funzionamento
temperatura di magazzino
dimensioni a norme
caratteristiche elettriche e di sicurezza a norme
Viti complete di rondella per mV

TECHNICAL DATA

accuracy
standard voltage drop
temperature coefficient
rod material
overloads:
continuous
up to 250 A
from 251 up to 2000 A
from 2001 up to 10000 A
operating temperature
storage temperature
dimensions according to
electrical and safety
characteristics according to
Screws and washers for mV

0,5%
60 - 100 - 150mV
0,002% /°C
manganina/manganin
1,2 In
10 In per/for 5 sec.
5 In per/for 5 sec.
2 In per/for 5 sec.
-25 + 60°C
-40 +80°C
DIN 43703
IEC/EN 60051
DIN 43780
M5 x 10

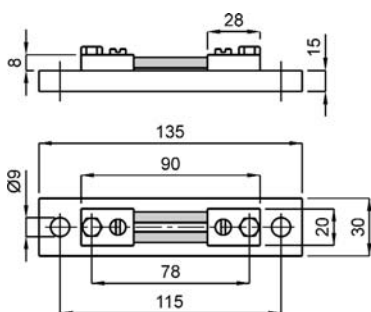


fig.1

kg 0,125

CORRENTE PRIMARIA PRIMARY CURRENT	CODICE - CODE			Fig.
	Caduta di tensione - Voltage drop			
	60mV	100mV	150mV	
1 A	SSHMAX001X60	SSHMAX001XCO	SSHMAX001XC5	1
1,5 A	SSHMAX1V5X60	SSHMAX1V5XCO	SSHMAX1V5XC5	
2,5 A	SSHMAX2V5X60	SSHMAX2V5XCO	SSHMAX2V5XC5	
4 A	SSHMAX004X60	SSHMAX004XCO	SSHMAX004XC5	
6 A	SSHMAX006X60	SSHMAX006XCO	SSHMAX006XC5	
10 A	SSHMAX010X60	SSHMAX010XCO	SSHMAX010XC5	
15 A	SSHMAX015X60	SSHMAX015XCO	SSHMAX015XC5	
20 A	SSHMAX020X60	SSHMAX020XCO	SSHMAX020XC5	
25 A	SSHMAX025X60	SSHMAX025XCO	SSHMAX025XC5	

ACCESSORI IN DOTAZIONE:

- basetta di supporto isolante
- 2 bulloni testa esagonale M5x12 e rondelle

SUPPLIED ACCESSORIES:

- insulating base
- 2 exagonal bolts M5x12 and washers

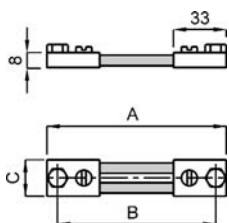


fig.2

kg 0,20

	60mV	100mV	150mV
A	100	123	225
B	80	103	205
C	20	20	25

CORRENTE PRIMARIA PRIMARY CURRENT	CODICE - CODE			Fig.
	Caduta di tensione - Voltage drop			
	60mV	100mV	150mV	
30 A	SSHMAX030X60	SSHMAX030XCO	SSHMAX030XC5	2
40 A	SSHMAX040X60	SSHMAX040XCO	SSHMAX040XC5	
50 A	SSHMAX050X60	SSHMAX050XCO	SSHMAX050XC5	
60 A	SSHMAX060X60	SSHMAX060XCO	SSHMAX060XC5	
80 A	SSHMAX080X60	SSHMAX080XCO	SSHMAX080XC5	
100 A	SSHMAX100X60	SSHMAX100XCO	SSHMAX100XC5	
120 A	SSHMAX120X60	SSHMAX120XCO	SSHMAX120XC5	
150 A	SSHMAX150X60	SSHMAX150XCO	SSHMAX150XC5	

ACCESSORI IN DOTAZIONE:

- 2 bulloni testa esagonale M8x16 e rondelle

SUPPLIED ACCESSORIES:

- 2 exagonal bolts M8x16 and washers

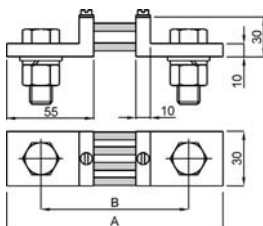


fig.3

	60mV	100mV	150mV
A	145	168	270
B	105	128	230
kg	0,45	0,55	0,85

CORRENTE PRIMARIA PRIMARY CURRENT	CODICE - CODE			Fig.
	Caduta di tensione - Voltage drop			
	60mV	100mV	150mV	
200 A	SSHMAX200X60	SSHMAX200XCO	SSHMAX200XC5	3
250 A	SSHMAX250X60	SSHMAX250XCO	SSHMAX250XC5	
300 A	SSHMAX300X60	SSHMAX300XCO	SSHMAX300XC5	

ACCESSORI IN DOTAZIONE:

- 2 bulloni testa esagonale M12x40 e rondelle

SUPPLIED ACCESSORIES:

- 2 exagonal bolts M12x40 and washers

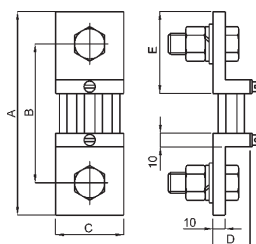


fig.4

	400A - 500A - 600A			800A - 1000A		
	60mV	100mV	150mV	60mV	100mV	150mV
A	145	168	270	165	188	290
B	105	128	230	115	138	240
C	40			60	70	
D	30			30	60	
E	55			65		
kg	0,68	0,85	1,10	1,05	1,45	1,80

CORRENTE PRIMARIA PRIMARY CURRENT	CODICE - CODE			Fig.
	Caduta di tensione - Voltage drop			
	60mV	100mV	150mV	
400 A	SSHMAX400X60	SSHMAX400XCO	SSHMAX400XC5	4
500 A	SSHMAX500X60	SSHMAX500XCO	SSHMAX500XC5	
600 A	SSHMAX600X60	SSHMAX600XCO	SSHMAX600XC5	
800 A	SSHMAX800X60	SSHMAX800XCO	SSHMAX800XC5	
1000 A	SSHMAX1K0X60	SSHMAX1K0XCO	SSHMAX1K0XC5	

ACCESSORI IN DOTAZIONE:

per 400A - 500A - 600A
- 2 bulloni testa esagonale M16x45 e rondelle
per 800A - 1000A
- 2 bulloni testa esagonale M20x50 e rondelle

SUPPLIED ACCESSORIES:

for 400A - 500A - 600A
- 2 exagonal bolts M16x45 and washers
for 800A - 1000A
- 2 exagonal bolts M20x50 and washers

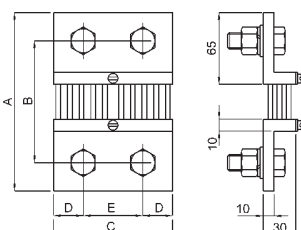


fig.5

	1200A - 1500A		2000A - 2500A	
	60mV	100mV	60mV	100mV
A	165	188	165	188
B	115	138	115	138
C	90		120	
D	21		30	
E	48		60	
kg	1,65	1,80	2,20	2,40

CORRENTE PRIMARIA PRIMARY CURRENT	CODICE - CODE		Fig.
	Caduta di tensione - Voltage drop		
	60mV	100mV	
1200 A	SSHMAX1K2X60	SSHMAX1K2XCO	5
1500 A	SSHMAX1K5X60	SSHMAX1K5XCO	
2000 A	SSHMAX2K0X60	SSHMAX2K0XCO	
2500 A	SSHMAX2K5X60	SSHMAX2K5XCO	

ACCESSORI IN DOTAZIONE:

per 1200A - 1500A
- 4 bulloni testa esagonale M16x45 e rondelle
per 2000A - 2500A
- 4 bulloni testa esagonale M20x60 e rondelle

SUPPLIED ACCESSORIES:

for 1200A - 1500A
- 4 exagonal bolts M16x45 and washers
for 2000A - 2500A
- 4 exagonal bolts M20x60 and washers

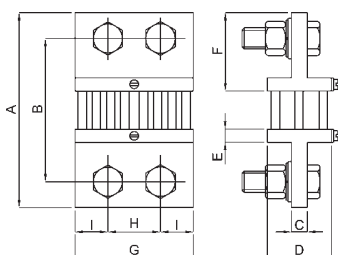


fig.6

	1200A	2000A	3000A - 4000A		
	1500A	2500A	60mV	100mV	150mV
A	290		165	188	300
B	240		115	138	250
C	15		15		25
D	60		60	130	
E	10		10	15	
F	65		65		70
G	90	120	120		
H	48	60	60		
I	21	30	30		
kg	3,50	4,40	4,25	4,90	7,70

CORRENTE PRIMARIA PRIMARY CURRENT	CODICE - CODE	Fig.
	Caduta di tensione - Voltage drop	
	150mV	
1200 A	SSHMAX1K2XC5	6
1500 A	SSHMAX1K5XC5	
2000 A	SSHMAX2K0XC5	
2500 A	SSHMAX2K5XC5	

ACCESSORI IN DOTAZIONE:

per 1200A - 1500A
- 4 bulloni testa esagonale M16x60 e rondelle
per 2000A - 2500A
- 4 bulloni testa esagonale M20x60 e rondelle

SUPPLIED ACCESSORIES:

for 1200A - 1500A
- 4 exagonal bolts M16x60 and washers
for 2000A - 2500A
- 4 exagonal bolts M20x60 and washers

CORRENTE PRIMARIA PRIMARY CURRENT	CODICE - CODE			Fig.
	Caduta di tensione - Voltage drop			
	60mV	100mV	150mV	
3000 A	SSHMAX3K0X60	SSHMAX3K0XCO	SSHMAX3K0XC5	6
4000 A	SSHMAX4K0X60	SSHMAX4K0XCO	SSHMAX4K0XC5	

ACCESSORI IN DOTAZIONE:

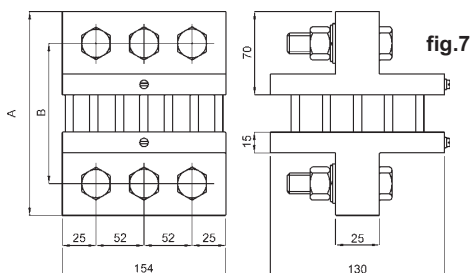
- 4 bulloni testa esagonale M20x60 e rondelle

SUPPLIED ACCESSORIES:

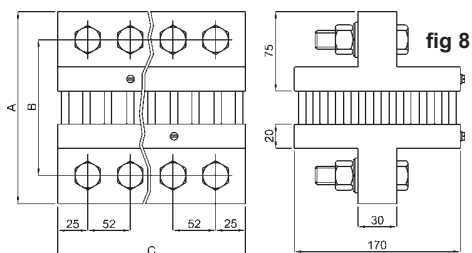
- 4 exagonal bolts M20x60 and washers

SSHMA

DERIVATORI PER C.C. SHUNT



	60mV	100mV	150mV
A	175	198	300
B	125	148	250
kg	11,60	12,75	19,00



	8000A - 10000A			12000A - 15000A		
	60mV	100mV	150mV	60mV	100mV	150mV
A	185	208	310	185	208	310
B	135	158	260	135	158	260
C	206			310		
kg	21,25	22,65	35,00	31,95	33,75	38,35

CORRENTE PRIMARIA PRIMARY CURRENT	CODICE - CODE			Fig.
	Caduta di tensione - Voltage drop			
	60mV	100mV	150mV	
5000 A	SSHMAX5K0X60	SSHMAX5K0XCO	SSHMAX5K0XC5	7
6000 A	SSHMAX6K0X60	SSHMAX6K0XCO	SSHMAX6K0XC5	

ACCESSORI IN DOTAZIONE: - 6 bulloni testa esagonale M20x80 e rondelle
SUPPLIED ACCESSORIES: - 6 exagonal bolts M20x80 and washers

CORRENTE PRIMARIA PRIMARY CURRENT	CODICE - CODE			Fig.
	Caduta di tensione - Voltage drop			
	60mV	100mV	150mV	
8000 A	SSHMAX8K0X60	SSHMAX8K0XCO	SSHMAX8K0XC5	8
10000 A	SSHMAX10KX60	SSHMAX10KXCO	SSHMAX10KXC5	
12000 A	SSHMAX12KX60	SSHMAX12KXCO	SSHMAX12KXC5	
15000 A	SSHMAX15KX60	SSHMAX15KXCO	SSHMAX15KXC5	

ACCESSORI IN DOTAZIONE:
per 8000A - 10000A - 8 bulloni testa esagonale M20x80 e rondelle
per 12000A - 15000A - 12 bulloni testa esagonale M20x85 e rondelle
SUPPLIED ACCESSORIES:
for 8000A - 10000A - 8 exagonal bolts M20x80 and washers
for 12000A - 15000A - 12 exagonal bolts M20x85 and washers

DATI PER L'ORDINAZIONE

- codice
- opzioni (vedi pag. 11.3)

ORDERING INFORMATION

- code
- options (see page 11.3)

NOTA:

I derivatori sono dispositivi che dissipano energia, di conseguenza sono soggetti a riscaldamento.

Per evitare problemi di surriscaldamento si consiglia una buona pulizia delle parti a contatto (derivatore - barra) e un adeguato serraggio dei bulloni.

NOTE:

The shunts releasing energy, tends to get hot.

In order to avoid problems of overheating do not forget to clean terminals and to tighten bolts

S1... S5...

DIVISORI DI TENSIONE RESISTIVI PER C.C. RESISTIVE VOLTAGE DIVIDERS FOR D.C.

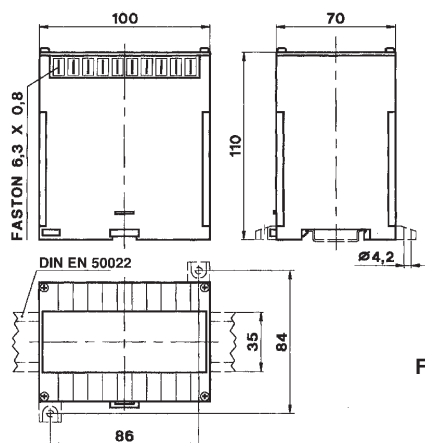


Fig. 1

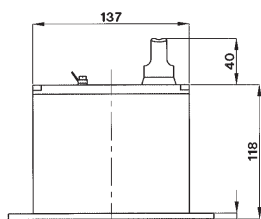
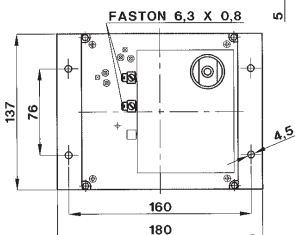


Fig. 2



DATI PER L'ORDINAZIONE

- codice
- opzioni (vedi pag. 11.3)

ORDERING INFORMATION

- code
- options (see page 11.3)

DATI TECNICI

materiale custodia
precisione
corrente assorbita
sovraccarico permanente
sovraccarico istantaneo
temperatura di funzionamento
temperatura di magazzino
costruzione a norme

TECHNICAL DATA

case material
accuracy
current consumption
continuous overload
instantaneous overload
operating temperature
storage temperature
manufactured according to

termoplastico autoestinguente
self extinguishing thermoplastic
1%
2 mA
1,2 Vn
2 Vn per/for 5 sec.
-25 + 60°C
-40 +80°C
CEI, IEC, VDE,
DIN, BS, CENELEC

TENSIONE PRIMARIA PRIMARY VOLTAGE	SECONDARIO SECONDARY	TENSIONE DI PROVA TEST VOLTAGE	CODICE CODE	Fig.
400 V	100 V 1mA	3 kV	S1XMVX400XCO	1
500 V		3 kV	S1XMVX500XCO	
600 V		3 kV	S1XMVX600XCO	
700 V		3 kV	S1XMVX700XCO	
800 V		3 kV	S1XMVX800XCO	
1000 V		3 kV	S1XMVX1K0XCO	
1200 V		5 kV	S1XMVX1K2XCO	
1500 V	5 kV	S1XMVX1K5XCO	2	
2000 V	100 V 1mA	5 kV		S5XMVX2K0XCO
2500 V		7 kV		S5XMVX2K5XCO
3000 V		7 kV		S5XMVX3K0XCO
4000 V		9 kV		S5XMVX4K0XCO
5000 V		11 kV	S5XMVX5K0XCO	

DESCRIZIONE

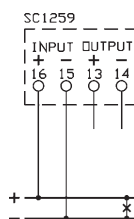
L'uscita del divisore è dimensionata per essere collegata ad un indicatore con fondo scala 100V e autoconsumo 1mA; in caso fosse necessario collegare un indicatore con caratteristiche differenti o più indicatori contemporaneamente, occorre specificarlo in fase d'ordine.

Cod. S5...: esecuzione ad 1 morsetto primario e 2 morsetti secondari (negativo comune)
Esecuzione a 2 morsetti primari con sovrapprezzo cod. VACXXX2MP

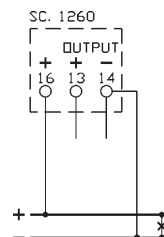
DESCRIPTION

The divider output is designed to be connected to a meter with 100V full scale and 1mA rated burden; please specify when ordering if it is necessary to connect a meter with different characteristics or more than one meter contemporary.

Cod. S5...: version with 1 primary terminal and 2 secondary terminals (common negative)
Two primary terminals version with extraprice cod. VACXXX2MP



S1...



S5...